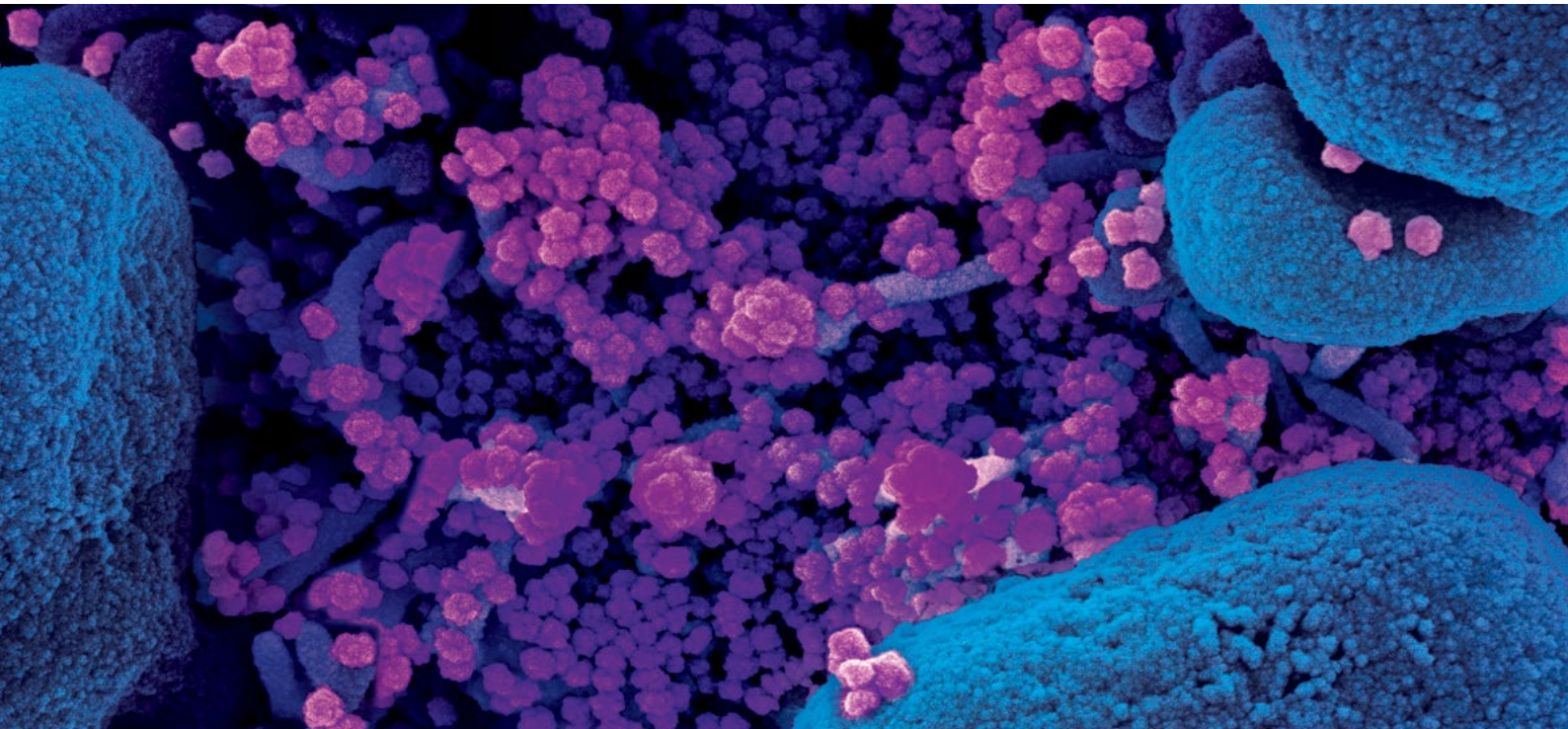


# RAPID-VIDITEST SARS-CoV-2



Apoptotic cells infected by SARS-CoV-2 virus particles, isolated from a patient sample

## VIDIA new immunochromatographic rapid tests

- intended as screening test for persons who are suspect to be infected by coronavirus.
- intended for the determination of the antibody response after an undergone infection and/or vaccination.

... the way to  
the correct  
results



**IgM**  
ANTIBODY RESPONSE

a proof of ongoing and recently  
undergone infection



**IgG**  
ANTIBODY RESPONSE

a proof of a later phase of active  
and undergone infection

### RAPID-VIDITEST in COVID-19 diagnostics

is an important tool for a quick identification of infected individuals and restriction of spreading of the virus. Rapid tests also play a role in the fight against the pandemic by defining the individuals with antibodies against the SARS-CoV-2 virus and developed adaptive immune response. They enable a fast and overall orientation in the numbers of infected individuals.

#### Benefits of the kits

- Qualitative detection of SARS-CoV-2 antigens
- Qualitative detection of IgG and IgM antibodies
- Qualitative detection of neutralizing IgG antibodies against RBD S1 protein
- International quality control INSTAND



### RAPID-VIDITEST

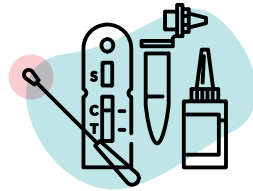
We are VIDIA spol s r. o.  
Czech biotechnological  
company with a wide  
range of diagnostic kits.  
We develop our products  
with high quality and  
guaranteed stability.

# RAPID-VIDITEST SARS-CoV-2

Diagnostical rapid tests **RAPID-VIDITEST** are **immunochromatographic assays in cassette format**. Quick screening antigen or antibody testing with **RAPID-VIDITEST** helps with diagnosis of COVID-19 caused by the SARS-CoV-2 virus. It enables to prove an active, undergone infection and a protective immune response after vaccination.

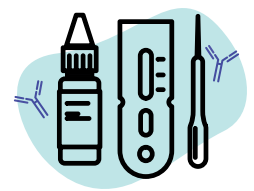
New **RAPID-VIDITEST anti-SARS-CoV-2 (RBD) IgG** kits are intended for **the determination the post-vaccination antibody response**. Only IgG antibodies targeted specifically on RBD Spike protein have a neutralizing and protective function and prevent binding of SARS-CoV-2 onto the cells. This is the goal of current mRNA vaccines.

## ANTIGEN DETECTION

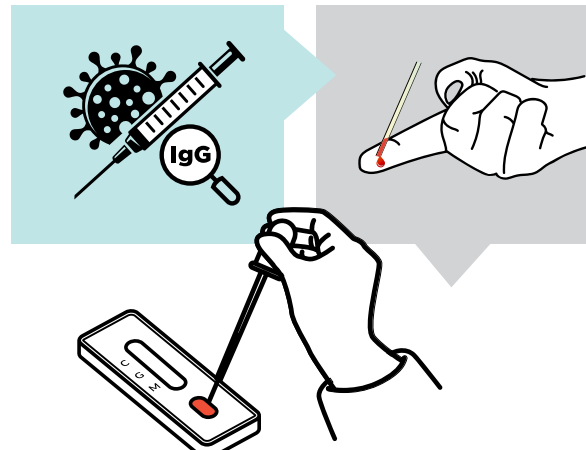
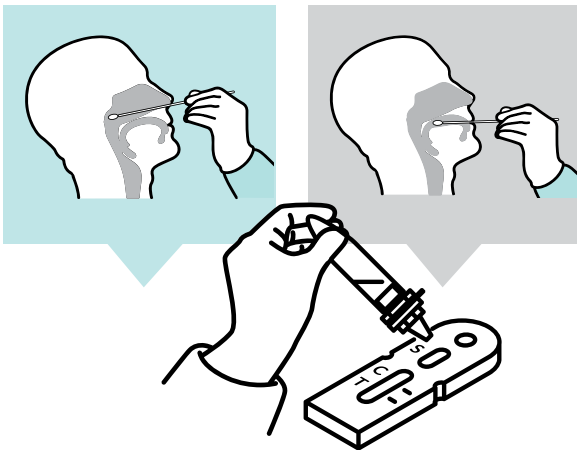


- Qualitative detection of SARS-CoV-2 antigens
- Samples from nasal cavity (ca 2 cm depth), nasopharyngeal swab in patients suspect of covid-19 infection
- Result in 15 minutes
- Test for professional use in vitro
- Intended as screening test for persons who are suspect to be infected by coronavirus
- User friendly and fast
- Storage temperature 2-30 °C
- INSTAND quality certificate

## ANTIBODY DETECTION



- Qualitative simultaneous detection and differentiation of IgG and IgM antibodies
- Qualitative detection of neutralizing IgG antibodies against RBD Spike protein (S1)
- Whole blood venous and capillary sampling, serum and plasma sample
- Result in 10 minutes
- Test for professional use in vitro
- Evaluation of immune response during and after infection
- Monitoring of the antibody response after vaccination
- Storage temperature 2-30 °C



## Our kits



REF	Products
ODZ-475	<b>RAPID-VIDITEST SARS-CoV-2 Antigen</b>
ODZ-476	<b>RAPID-VIDITEST Covid-19 + Influenza A+B Antigen</b>
ODZ-478	<b>RAPID-VIDITEST anti-SARS-CoV-2 IgG/IgM</b>
ODZ-496	<b>RAPID-VIDITEST anti-SARS-CoV-2 (RBD) IgG</b>

