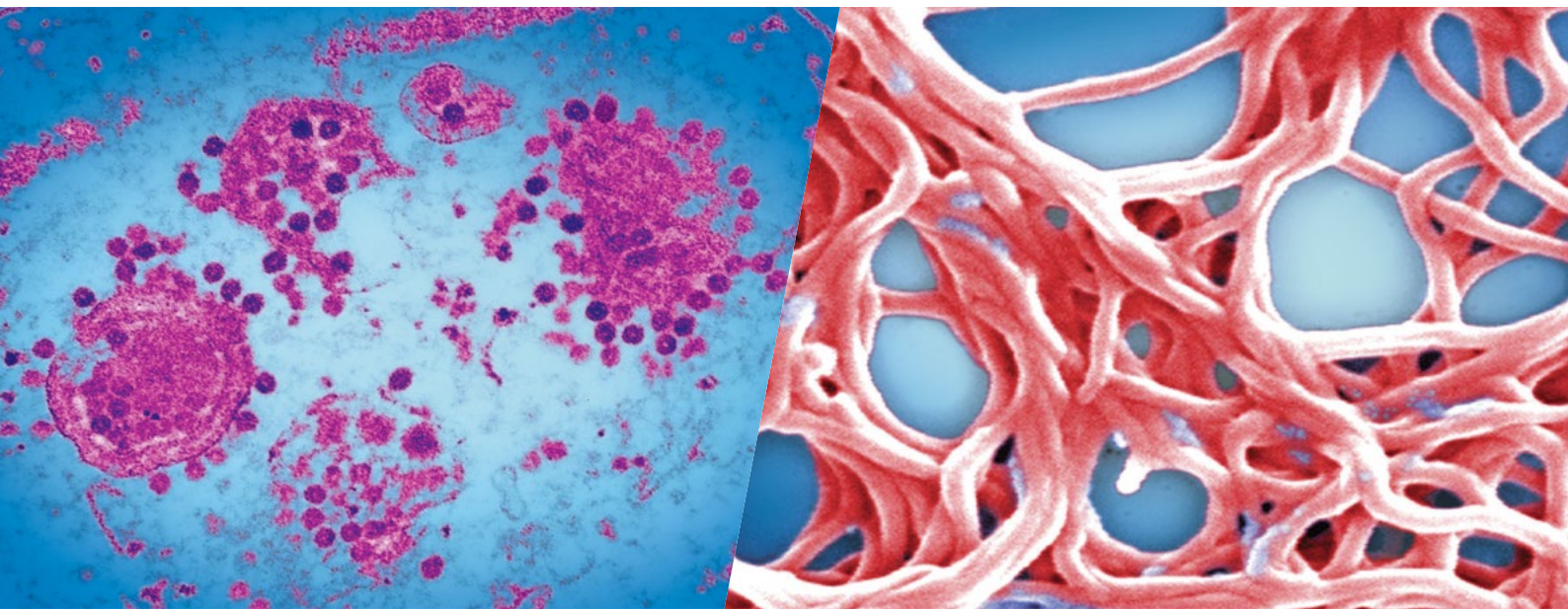


## LIA-VIDITEST MULTIPLEX

# Tick-borne encephalitis virus *Borrelia burgdorferi sensu lato*



## VIDIA enzymatic Line Immunoassay kits

- intended for qualitative detection of specific antibodies IgG and IgM against main pathogenic borrelia strains and tick-borne encephalitis virus (TBEV).

... the way to  
the correct  
results



**IgM**  
ANTIBODY RESPONSE

a proof of ongoing and recent active infection



**IgG**  
ANTIBODY RESPONSE

a proof of later phase of active and undergone infection

### LIA in neuroinfection diagnostics

The LIA (Line ImmunoAssay) method is based on the proof of early IgM and late IgG antibodies against antigens of ***Borrelia burgdorferi sensu lato*** strains from the spirochete group, which cause Lyme disease (LD). Strips encompass *B. afzelii*, *B. garinii* and *B. burgdorferi sensu stricto* genotypes with the most suitable antigen combination. Strips also include a native antigen TBEV for parallel diagnostics of Tick-borne encephalitis (TBE).

### Benefits of the kits

- Multiplex kits for both LD and TBE diagnostics
- Highly specific and sensitive recombinant antigens of the pathogenic borrelia strains and tick-borne encephalitis virus
- Qualitative evaluation of IgG and IgM antibodies
- Human serum, plasma and cerebrospinal fluid sample



**LIA-VIDITEST**  
Kits come from  
our own research,  
development and  
production.

We are VIDIA spol s r. o. Czech biotechnological company with a wide range of kits for diagnostic examination. We develop our products with high quality.

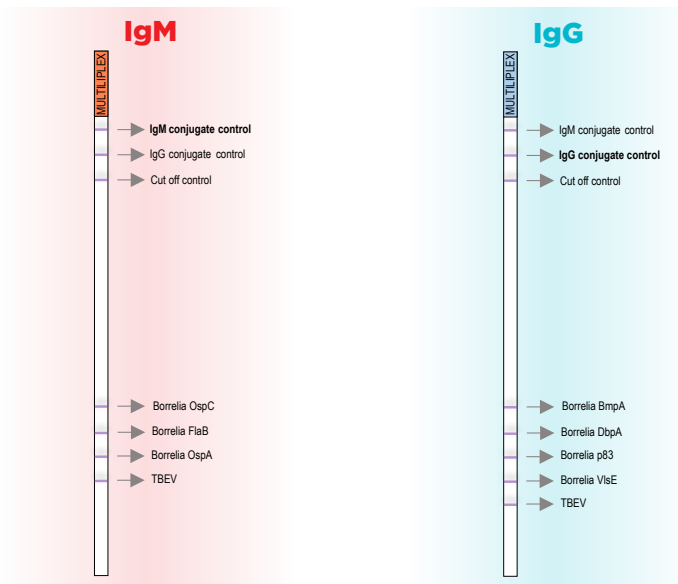
# LIA-VIDITEST MULTIPLEX

## Tick-borne encephalitis virus Borrelia burgdorferi sensu lato

### Enzymatic Line Immunoassay kits

is used in diagnostics of serous neuroinfections of two main infectious agents as well as confirmatory evaluation to interpret ELISA test results.

LIA-VIDITEST kits use various combinations of specific and sensitive recombinant antigens from different genotypes of borrelia and native antigen (virus particle) of the tick-borne encephalitis virus (TBEV). Sharp lines of the antigens lie in exactly defined positions on nitrocellulose strips. Therefore, multiplex LIA-VIDITEST kits offer two tests in one. They enable to differentiate antibodies typical for different phases of infection, which is important for a successful treatment of LD and an early recognition of TBE.



### Benefits of the measurement

- Qualitative determination of IgG and IgM antibodies in human serum, plasma and cerebrospinal fluid
- Parallel detection of 2 infectious agents
- Unified incubation times, temperatures, reagents in r. t. u.
- Parallel testing of more samples for both IgM and IgG
- High sensitivity and specificity of the kits
- Confirmatory evaluation for the test results from ELISA-VIDITEST and MONO-VIDITEST
- Evaluation of the results with our VidiScan software
- Evaluation according to the intensity of the cut-off line
- Validated for automatic or semi-automatic RoboBlot, BeeBlot, B20 analyzers

### Our kits



REF	Products	Number of strips
ODZ-396	LIA-VIDITEST Multiplex Borrelia and TBEV IgG	16
ODZ-397	LIA-VIDITEST Multiplex Borrelia and TBEV IgM	16



**VIDIA spol. s r.o.**  
Nad Safinou II 365, 252 50 Vestec  
Czech Republic

tel.: +420 261 090 565  
fax: +420 261 090 566

e-mail: info@vidia.cz  
www.vidia.cz

