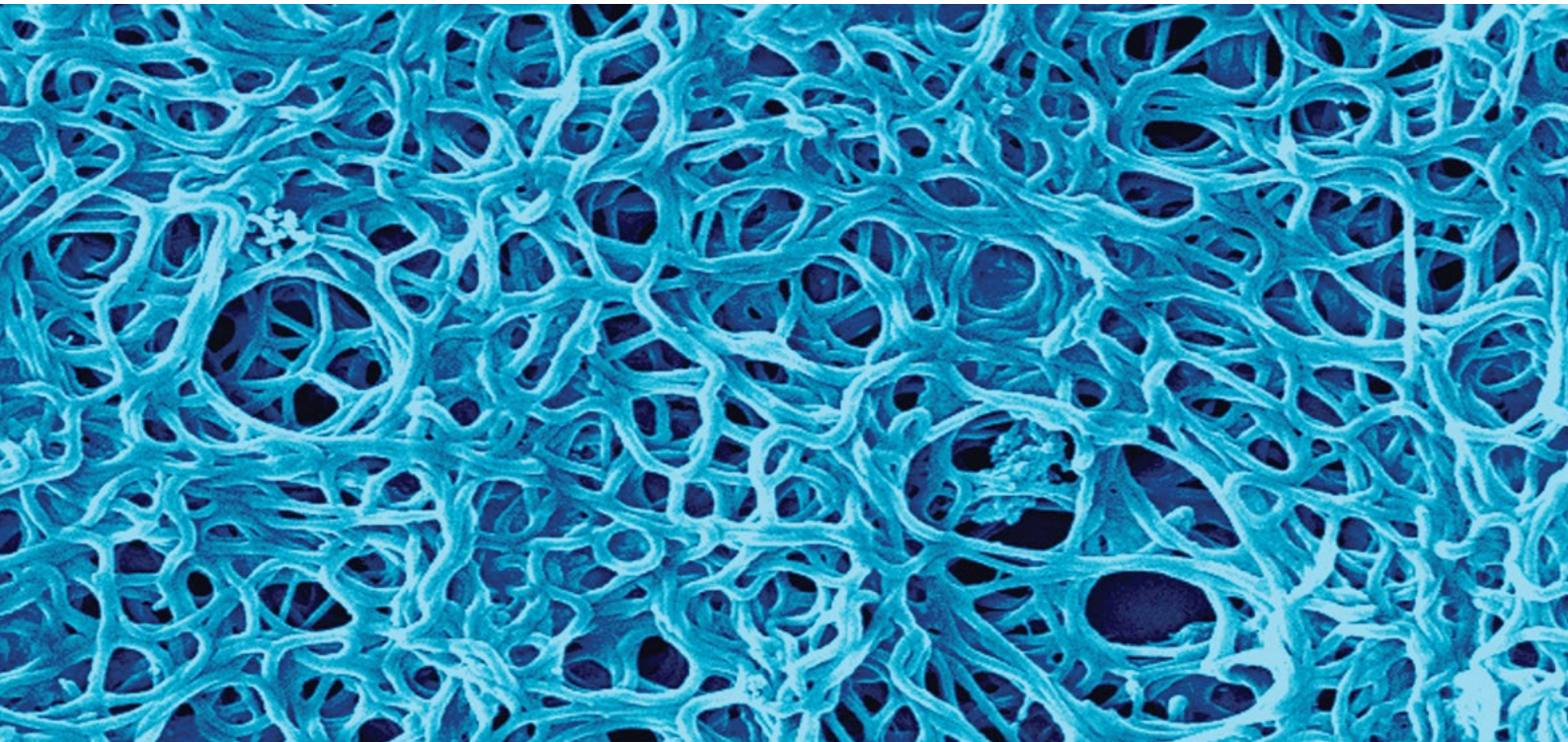


LIA-VIDITEST

Borrelia burgdorferi sensu lato



VIDIA enzymatic Line Immunoassay kits

- Intended for qualitative detection of specific IgG and IgM antibodies against main pathogenic borrelia strains

... the way to
the correct
results



IgM
ANTIBODY RESPONSE

a proof of ongoing and recent active infection



IgG
ANTIBODY RESPONSE

a proof of later phase of active and undergone infection

LIA in neuroinfection diagnostics

The LIA (Line ImmunoAssay) method is based on the detection of antibodies against antigens of **Borrelia burgdorferi sensu lato** strains, which cause Lyme disease (LD). Strips encompass *B. afzelii*, *B. garinii* and *B. burgdorferi sensu stricto* genotypes with the most suitable antigen combination for the best sensitivity and specificity.

Benefits of the kits

- Human serum, plasma, cerebrospinal fluid and synovial fluid sample
- Recombinant antigens of pathogenic borrelia strains including *B. spielmanii* and antigen for *Anaplasma phagocytophilum*



LIA-VIDITEST
Kits come from
our own research,
development and
production.

We are VIDIA spol s r. o. Czech biotechnological company with a wide range of kits for diagnostic examination. We develop our products with high quality.

LIA-VIDITEST

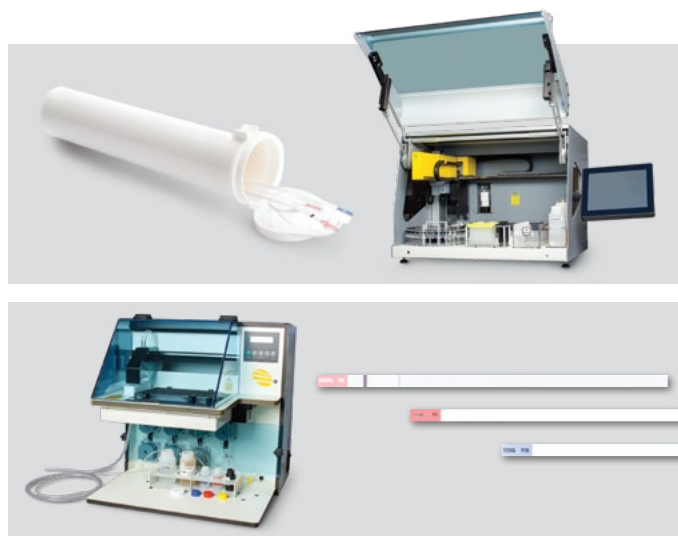
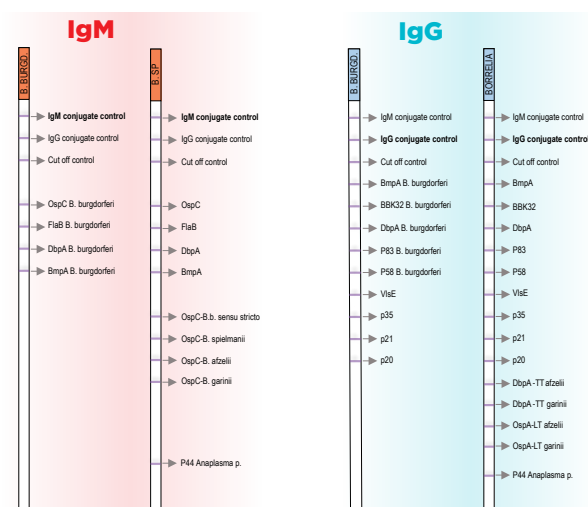
Borrelia burgdorferi sensu lato

Line Immunoassay method

is used in diagnostics of multisystem disease LD as a confirmatory evaluation to interpret results of ELISA-VIDITEST and MONO-VIDITEST.

LIA-VIDITEST kits use various combinations of highly sensitive and specific recombinant antigens which are in exactly defined positions on nitrocellulose strips within the particular borrelia genotypes. Strips also include *Anaplasma phagocytophilum* antigen for the diagnostics of human granulocytic anaplasmosis (HGA).

LIA-VIDITEST kits enable to differentiate antibodies typical for various phases of the infection which is important for a successful treatment of LD. Apart from usage in serodiagnostics LD, they are also suitable for the diagnostics of neuroborreliosis in cerebrospinal fluid.



Benefits of the measurement

- Qualitative determination of IgG and IgM antibodies in human serum, plasma, cerebrospinal fluid, synovial fluid
- Specific antigens of various borrelia strains
- Unified incubation times, temperatures, reagents in r. t. u.
- Parallel testing of more samples for both IgM and IgG in one run
- High sensitivity and specificity
- Confirmation of positive and borderline results in ELISA tests
- Evaluation of the results with our VidiScan software
- Validated for automatic or semi-automatic RoboBlot, BeeBlot, B20 analyzers

Our kits



REF	Products	Number of strips
ODZ-316	LIA-VIDITEST anti-Borrelia IgG	16
ODZ-317	LIA-VIDITEST anti-Borrelia IgM	16
ODZ-317SP	LIA-VIDITEST anti-Borrelia IgM sp (+spielmanii)	16
ODZ-490	LIA-VIDITEST anti-Borrelia IgG afzelii	16
ODZ-491	LIA-VIDITEST anti-Borrelia IgM afzelii	16
ODZ-492	LIA-VIDITEST anti-Borrelia IgG garinii	16
ODZ-493	LIA-VIDITEST anti-Borrelia IgM garinii	16
ODZ-494	LIA-VIDITEST anti-Borrelia IgG burgdorferi sensu stricto	16
ODZ-495	LIA-VIDITEST anti-Borrelia IgM burgdorferi sensu stricto	16

