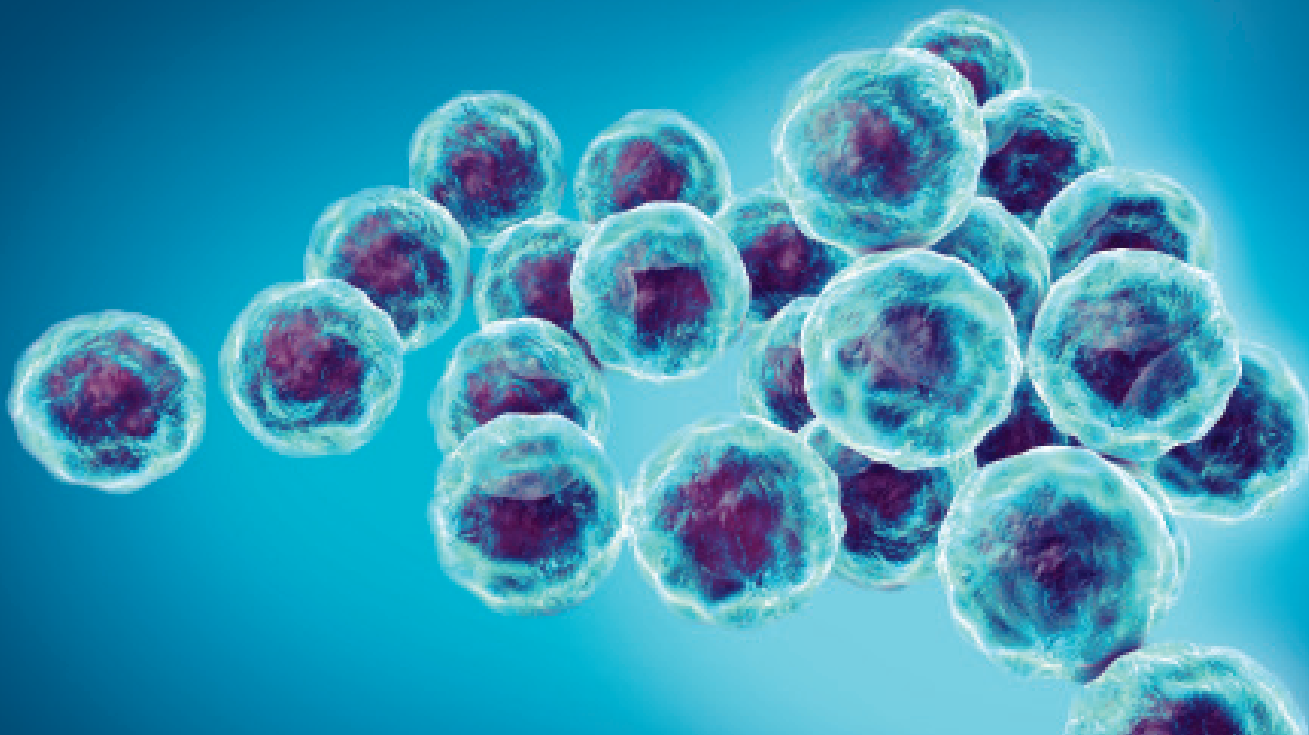


MONO-VIDITEST

Chlamydia pneumoniae



VIDIA new immunoenzymatic kits

· intended for the semi-quantitative detection of IgA, IgG and IgM antibodies against Chlamydia pneumoniae in human serum and plasma.

...the way
to the correct
result



IgM
ANTIBODY
RESPONSE

evidence of an early primary
infection



IgA
ANTIBODY
RESPONSE

evidence of an infection
that has already occurred



IgG
ANTIBODY
RESPONSE

evidence of an acute
or chronic infection

Serological diagnostics

is a basic prerequisite for effective therapy. Detection of a chlamydial infection is based on the determination of titer of antibodies by the ELISA method. It is therefore necessary to support the clinical impact of chlamydiosis with this laboratory examination as well.

Benefits of the kits

- Semi-quantitative evaluation
- Cassette disposable format
- All reagents included in the cassette
- Unified incubation and washing times



MONO-VIDITEST

The kits are coming from own research, development and production.

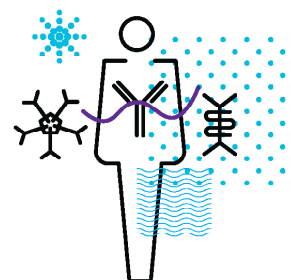
We are VIDIA spol. s r. o., a Czech biotechnology company with a wide range of kits for diagnostic examinations. Our products are developed with high quality.

MONO-VIDITEST

Chlamydia pneumoniae

Insidious bacteria

This intercellular parasite is considered to be the most dangerous and the most common cause of respiratory diseases in the world. Infections cause both humoral and cellular immune response. Everyone meets it throughout their life, but it mostly waits in the so-called latent form. It is usually easily confused with other infections.



Principle of the test and procedure in steps



1. step

- Preparation of test serum / plasma
- In the VIDIMAT analyzer, reagent dosing and the entire measurement process take place completely automatically

2. step

- Specific primary antibody binds to antigens immobilized on the solid surface of the cassette well (Incubation for 30 minutes at 37 °C)
- Unbound antibody is removed during washing

3. step

- Enzyme-labeled secondary antibody binds to primary antibody during (Incubation for 30 minutes at 37 °C)
- Unbound antibody is removed during washing

4. step

- A reaction of enzyme with substrate occurs (Incubation for 15 minutes at 37 °C)

5. step

- Signal detection
- Measurement of absorbance at 450 / 620-690 nm
- The evaluation of the test result takes place completely automatically in the VIDIMAT analyser

Benefits of measurement

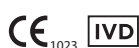
- The entire test and evaluation takes place automatically in combination with the VIDIMAT analyser
- Possibility of simultaneous testing of MONO and ELISA tests in one run
- Unified steps, times and reagents for both tests
- Easier and more convenient to use for one or more samples at once



VIDIMAT

We provide an accurate automatic analyser for a simple solution of automation of infectious serology in monotest and plate format.

Our kits



REF	Produkty
KZ-230-12	MONO-VIDITEST anti-Chlamydia pneumoniae IgG
KZ-231-12	MONO-VIDITEST anti-Chlamydia pneumoniae IgM
KZ-232-12	MONO-VIDITEST anti-Chlamydia pneumoniae IgA



VIDIA spol. s r.o.
Nad Safinou II 365, 252 50 Vestec
Czech Republic

tel.: +420 261 090 565
fax: +420 261 090 566

e-mail: info@vidia.cz
www.vidia.cz

