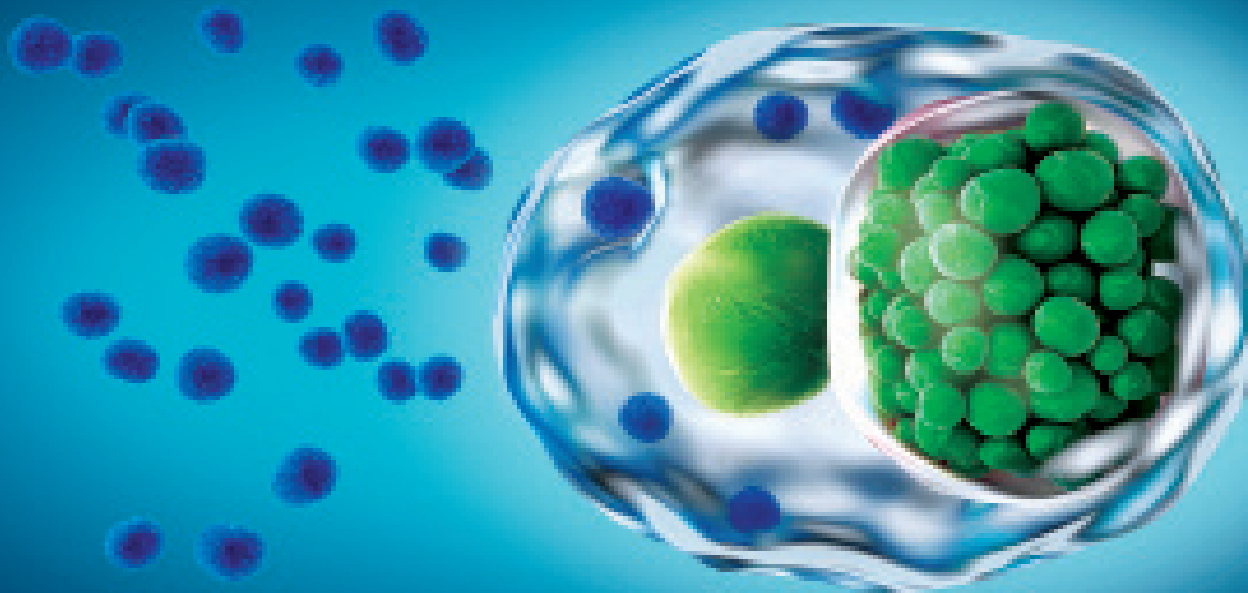


ELISA–VIDITEST *Chlamydia pneumoniae*



VIDIA new immunoenzymatic kits

· intended for the qualitative and semi-quantitative detection of IgA, IgG and IgM antibodies against *Chlamydia pneumoniae* in human serum and plasma.

...the way
to the correct
result



IgM
ANTIBODY
RESPONSE

evidence of an early primary
infection



IgA
ANTIBODY
RESPONSE

evidence of an infection
that has already occurred



IgG
ANTIBODY
RESPONSE

evidence of an acute or chronic
infection

Serological diagnostics

is a basic prerequisite for effective therapy. Detection of a chlamydial infection is based on the determination of titer of antibodies by the ELISA method. It is therefore necessary to support the clinical impact of chlamydiosis with this laboratory examination as well.

Benefits of the kits

- Qualitative and semi-quantitative evaluation
- Reagents in r. t. u.
- Unified incubation times, temperatures and reagents
- Color-coded reagents



ELISA–VIDITEST

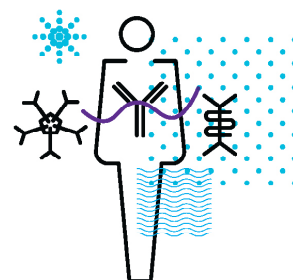
The kits are coming from own research, development and production.

We are VIDIA spol. s r. o., a Czech biotechnology company with a wide range of kits for diagnostic examinations. Our products are developed with high quality.

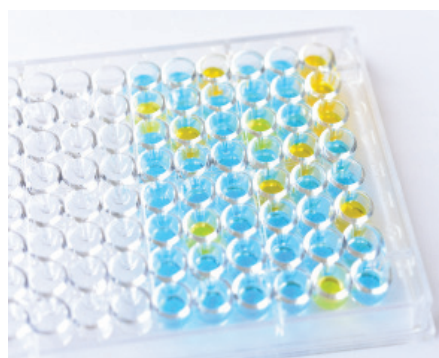
ELISA–VIDITEST Chlamydia pneumoniae

Insidious bacteria

This intercellular parasite is considered to be the most dangerous and the most common cause of respiratory diseases in the world. Infections cause both humoral and cellular immune response. Everyone meets it throughout their life, but it mostly waits in the so-called latent form. It is usually easily confused with other infections.



Principle of the test and procedure in steps



1. step

- Preparation of reagents and test serum / plasma
- Dilution, dosing and the whole measurement process takes place completely automatically in the VIDIMAT analyser

2. step

- Dispense of 100 µl of controls and diluted samples into the wells
- The primary antibody binds to the antigens on the solid surface of the wells
- Incubation for 30 minutes at 37 °C
- Suction and washing of the wells with 4 x 250 ml wash solution

3. step

- Dosage of 100 µl peroxidase conjugate
- The enzyme-labeled secondary antibody binds to the primary antibody during incubation
- Incubate for 30 minutes at 37 °C
- Suction and washing of the wells with 4 x 250 ml wash solution

4. step

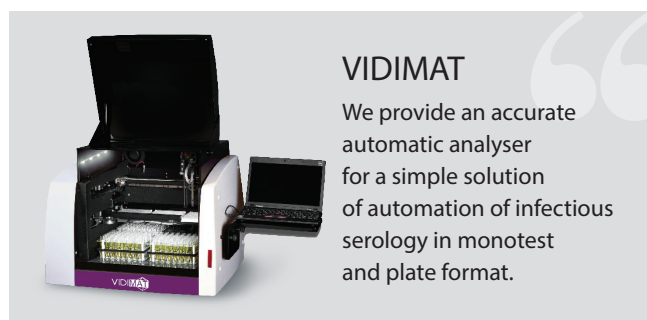
- Dosage of 100 µl of TMB chromogen substrate solution
- The enzyme reacts with the substrate
- Incubation for 15 minutes at RT
- Dosage of 100 µl of STOP solution

5. step

- Measurement of absorbance at 450 / 620-690 nm within 20 minutes of stopping the reaction
- The evaluation of the test result takes place completely automatically in the VIDIMAT analyser

Benefits of measurement

- Qualitative and semi-quantitative evaluation of results
- Unified reagents for all kits in r.t.u.
- Unified grey zone, incubation times and temperatures
- Manual and / or automatic processing
- Automatic course in our VIDIMAT analyser
- Possibility of simultaneous measurement of ELISA and MONO tests in one run



VIDIMAT

We provide an accurate automatic analyser for a simple solution of automation of infectious serology in monotest and plate format.

Our kits



REF	Produkty
ODZ-457	ELISA–VIDITEST anti-Chlamydia pneumoniae IgG
ODZ-458	ELISA–VIDITEST anti-Chlamydia pneumoniae IgM
ODZ-459	ELISA–VIDITEST anti-Chlamydia pneumoniae IgA



VIDIA spol. s r.o.
Nad Safinou II 365, 252 50 Vestec
Czech Republic

tel.: +420 261 090 565
fax: +420 261 090 566

e-mail: info@vidia.cz
www.vidia.cz

